

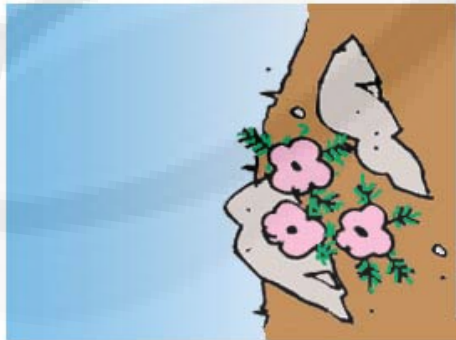
*The sun — a typical star*

## Biome characteristics

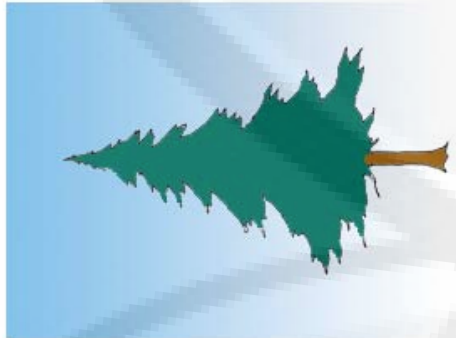
Biome	Characteristics
forest	<ul style="list-style-type: none"><li>• considerable rainfall</li><li>• hot or cold</li><li>• extensive land area dominated by trees</li><li>• includes the tropical rain forest and northern <b>coniferous</b>, or evergreen, forest</li></ul>
tundra	<ul style="list-style-type: none"><li>• moderate rainfall</li><li>• cold</li><li>• treeless, with small hardy plants growing close to the ground includes the Russian steppe and sub-arctic Canada</li></ul>
desert	<ul style="list-style-type: none"><li>• very dry</li><li>• hot or cold</li><li>• plants have water-conserving features</li><li>• includes the Sahara Desert and Antarctica</li></ul>
grassland	<ul style="list-style-type: none"><li>• low rainfall</li><li>• warm or cold</li><li>• mostly grass, with some hardy shrubs and a few trees</li><li>• includes the North American prairies</li></ul>
aquatic	<ul style="list-style-type: none"><li>• warm or cold</li><li>• has plants and animals able to live with low to high salt content</li><li>• includes all water-covered areas of the earth</li></ul>



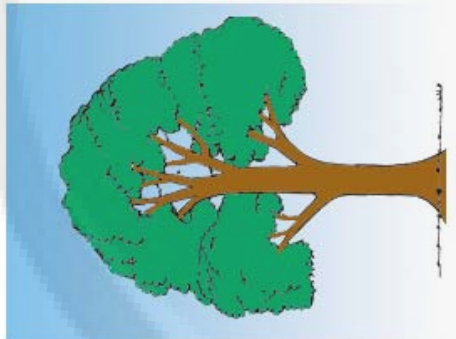
ice and snow



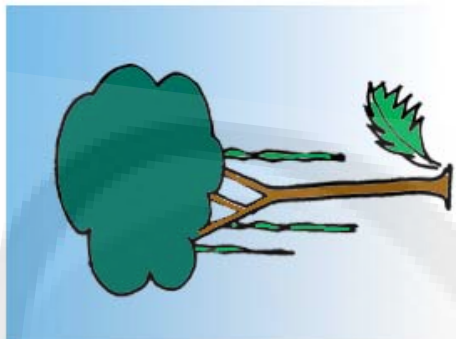
tundra



needleleaf forest



temperate deciduous forest

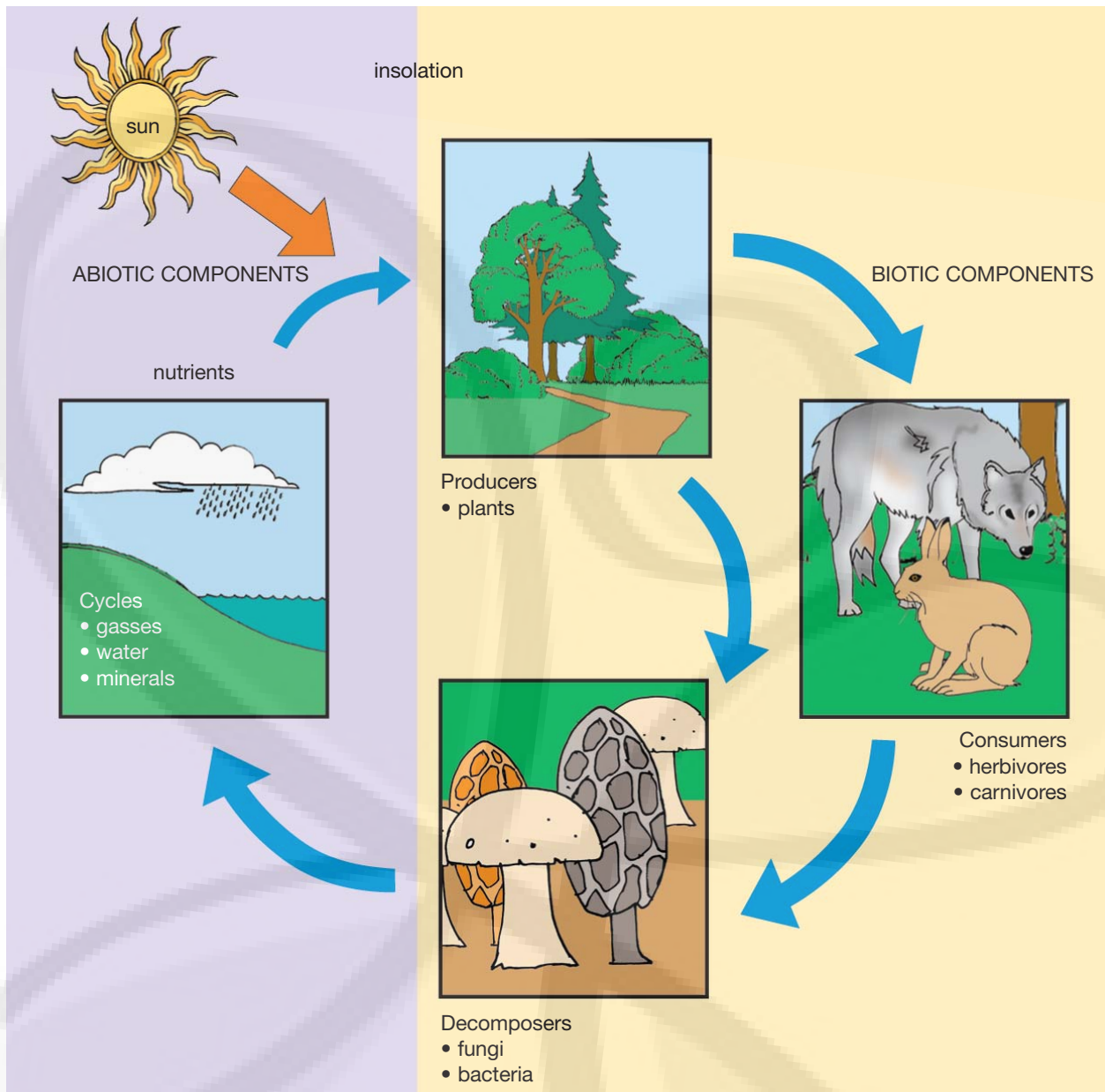


tropical rain forest



Latitudinal zonation increasing latitude from the equator

*Biomes created by latitude*



*Relationships between the biotic and abiotic parts of an ecosystem*