

Zoology

LOCAL ANIMALS

Summary of the factors that influence animal routines	1
Herbivores, omnivores, and carnivores and the type of foods they eat	2
Animals and their homes	3
Self-testing review sheet	4
Worksheet: The Routines of Local Animals	5

EXTERNAL ANATOMY AND CLASSIFICATION

The Linnaean classification of the humpback whale	7
Animal classification chart, pages 1 and 2	8
Activity: Reviewing Classification Vocabulary	10
Diagram: butterfly	13
Diagram: spider	14
Diagram: crab	15
Diagram: snail	16
Comparison of the features of arthropods and a mollusk	17
The distinguishing features of four invertebrates	18
Diagram: fish	19
Diagram: frog	20
Diagram: of tortoise	21
Diagram: bird	22
Diagram: guinea pig	23
Comparison of the main features of five vertebrate classes	24

IDENTIFICATION

Types of bird bills	25
-------------------------------	----

INTERNAL ANATOMY AND PHYSIOLOGY

Diagram: biceps/triceps	26
Diagram: Digestive system of an earthworm	27
Organ systems and the life activities they perform	28
Activity: Learning About the Organ Systems of Animals	29
Sexual reproduction in animals	30
Life cycle of a jellyfish	31
Activity: Reviewing Animal Reproduction	32

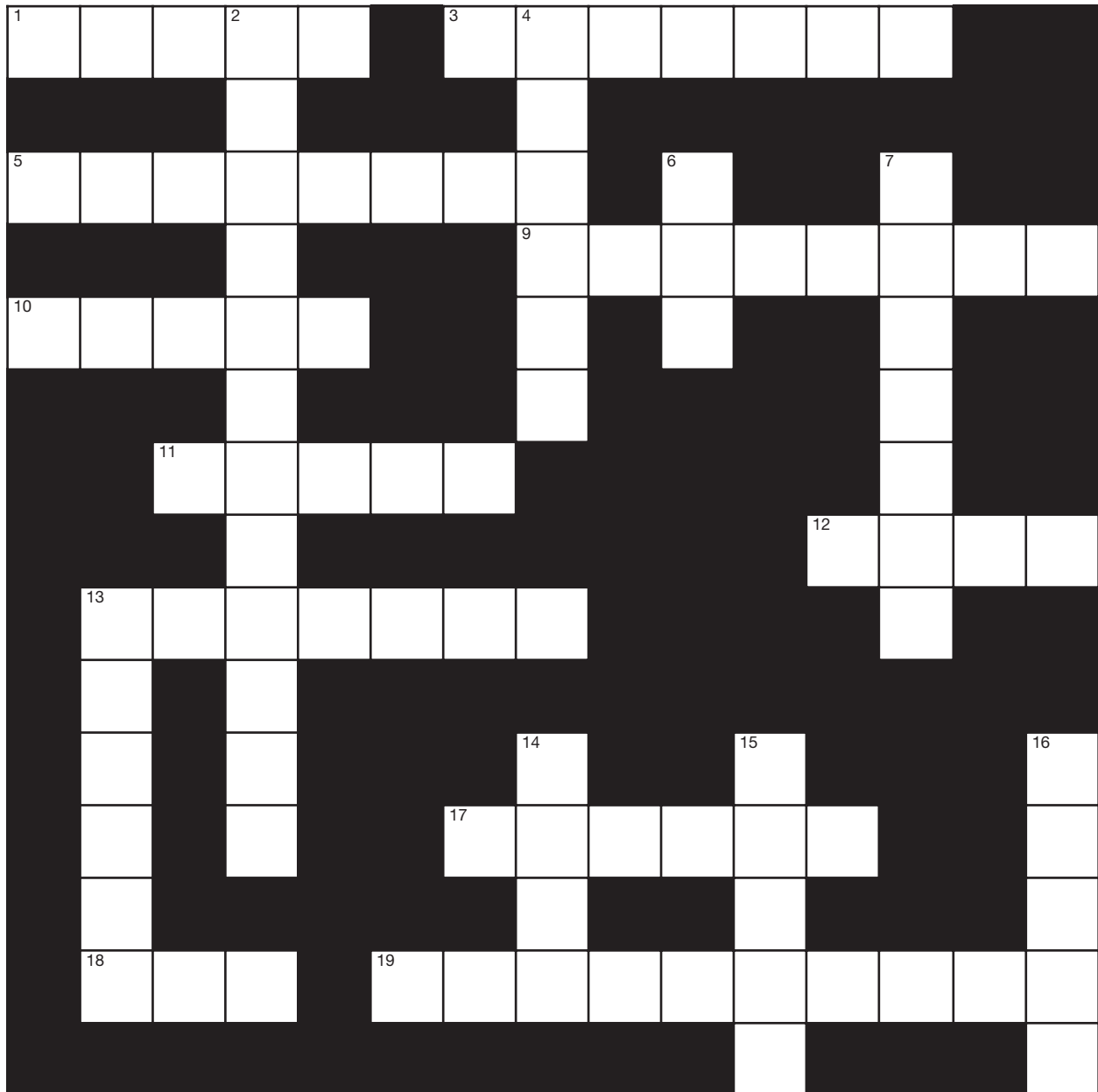
ADAPTING TO DIFFERENT HABITATS

Examples of hot and cold deserts37
Interesting non-mammalian animals of the African grasslands38
Linnaean classification of some African grassland animals39
A general guide to the eating habits of some coral reef animals40

RELATIONSHIP OF HUMANS WITH ANIMALS

Summary of animal byproducts41

ACTIVITY: REVIEWING CLASSIFICATION VOCABULARY



CLUES

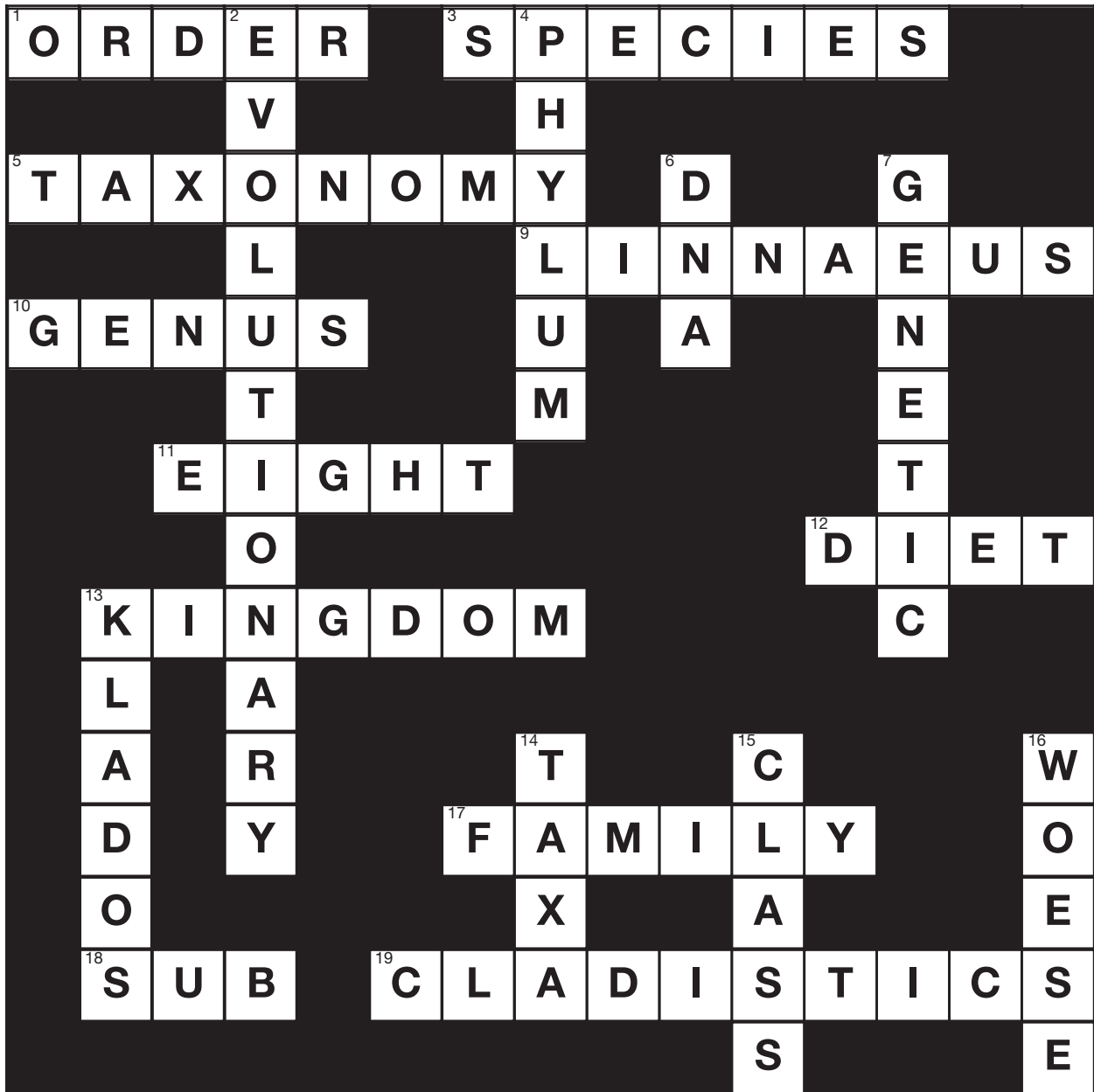
Across:

1. The category or taxon in the classification system that groups a number of families.

3. The smallest taxonomic unit in the classification system, which includes animals that closely resemble each other and that can interbreed.

5. The term that describes the science of biological classification.

Classification Crossword Puzzle Answer Sheet



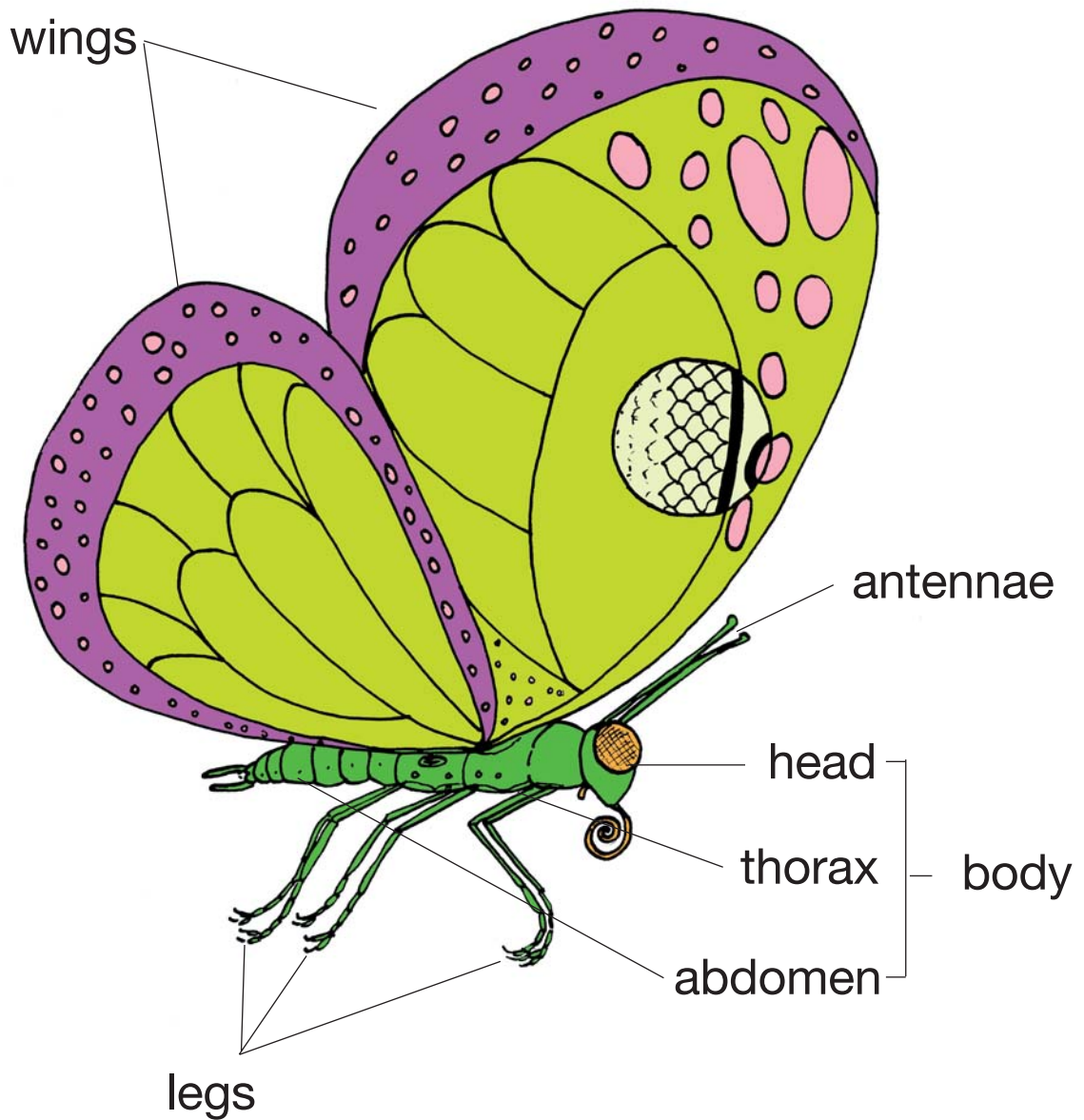
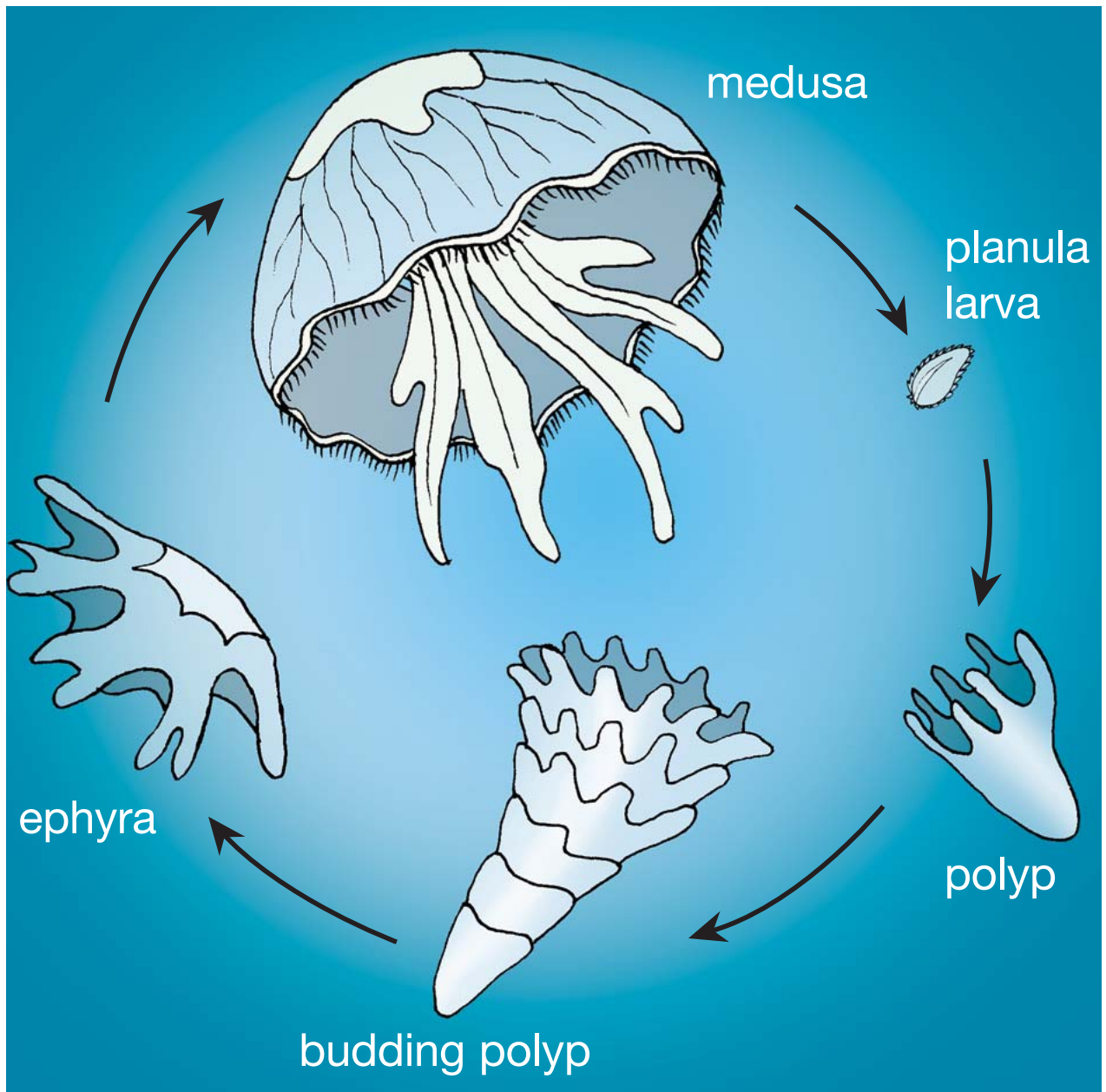


Illustration of a butterfly (phylum Arthropoda, class Insecta) showing the features shared by most insects



Life cycle of a jellyfish